

Unlocking the Potential: Fair Shared Green And Recreational Spaces Guidelines For Gender Responsive And Inclusive Communities

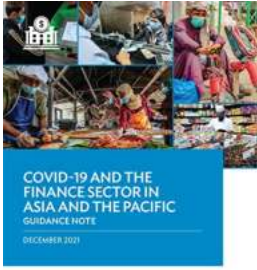
In today's ever-evolving world, the concept of creating fair shared green and recreational spaces has gained significant momentum. As societies strive to build more inclusive communities, it is crucial to ensure that these spaces are designed in a way that caters to everyone's needs, regardless of their gender. In this article, we will explore the guidelines for gender-responsive and inclusive design, highlighting the importance of fair shared spaces and their impact on creating equitable communities.

Understanding the Need for Gender-Responsive Spaces

Traditional public spaces, such as parks and recreational areas, have often been designed without taking into consideration the specific needs and concerns of different gender groups. This has resulted in a significant imbalance in opportunities and access to these spaces for women, LGBTQ communities, and other marginalized groups.

The creation of gender-responsive spaces aims to address this imbalance by ensuring that these areas are accessible, safe, and welcoming for everyone. Gender-responsive design approaches recognize the diverse experiences and requirements of different gender identities, promoting inclusivity and equal access to recreational spaces.

**Fair Shared Green and Recreational Spaces—
Guidelines for Gender-Responsive and Inclusive**



Design: Tbilisi Municipality

by Asian Development Bank (Kindle Edition)

★★★★☆ 4.5 out of 5

Language : English
File size : 6297 KB
Text-to-Speech : Enabled
Screen Reader : Supported
Enhanced typesetting : Enabled
Word Wise : Enabled
Print length : 157 pages



Guidelines for Gender-Responsive and Inclusive Design

To create fair shared green and recreational spaces, it is essential to follow specific guidelines that promote gender responsiveness and inclusivity. Let's explore some of these guidelines.

1. Safety and Security

Ensuring the safety and security of all users is paramount in designing gender-responsive spaces. This involves proper lighting, clear sightlines, and appropriate placement of amenities, such as restrooms and seating areas. Additional security measures, such as surveillance systems and emergency call boxes, can also contribute to creating a safe environment for everyone.

2. Accessible Design

Accessible design aims to remove physical barriers and provide equal access to all individuals. This includes designing pathways, ramps, and entrances that are suitable for people with disabilities. Furthermore, it is crucial to consider the

needs of parents with strollers, the elderly, and individuals with temporary mobility challenges when planning the layout of recreational spaces.

3. Inclusive Amenities

When designing fair shared green spaces, it is vital to include a variety of amenities that cater to different needs and preferences. This may include seating areas, shaded spots, drinking water fountains, and recreational equipment suited to various age groups. By incorporating a diverse range of amenities, recreational spaces become more inclusive and appealing to a wider audience.

4. Community Engagement

Engaging the community in the design and development process is crucial for creating gender-responsive recreational spaces. By involving local residents, community groups, and organizations representing marginalized groups, it becomes easier to gather insights and address specific concerns. This collaborative approach ensures that the design reflects the needs and aspirations of the community.

5. Multi-Purpose Spaces

To maximize the utilization and inclusivity of green and recreational spaces, designing multi-purpose areas is essential. These spaces can accommodate a variety of activities, such as exercise classes, cultural events, community gatherings, and sports activities. By allowing diverse usage, recreational spaces become vibrant and welcoming for all individuals.

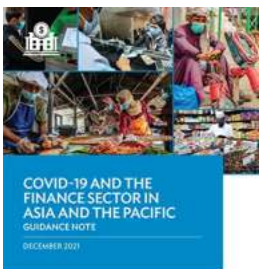
The Impact of Fair Shared Spaces on Gender Equality

Designing gender-responsive spaces has far-reaching effects on promoting gender equality and social inclusion. When recreational spaces cater to the diverse needs of different gender groups, barriers to participation and enjoyment

are eliminated. This fosters a sense of belonging, empowerment, and enhanced well-being for individuals of all gender identities.

Additionally, fair shared green spaces play a vital role in challenging traditional gender norms and stereotypes. By creating inclusive spaces where everyone feels comfortable, societal perceptions and attitudes towards gender roles can evolve positively. This encourages a more equitable and inclusive society where individual rights and freedoms are respected.

In summary, the creation of fair shared green and recreational spaces is essential in building gender-responsive and inclusive communities. By following the guidelines outlined above, cities and towns can ensure that their spaces accommodate the needs of everyone, regardless of their gender identity. The impact of these spaces goes beyond just access; it shapes societal perceptions, promotes gender equality, and fosters a sense of inclusivity and empowerment. Let's unlock the potential of fair shared spaces and pave the way for a truly equitable and vibrant society.



Fair Shared Green and Recreational Spaces— Guidelines for Gender-Responsive and Inclusive Design: Tbilisi Municipality

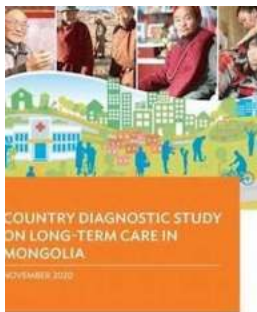
by Asian Development Bank (Kindle Edition)

★★★★☆ 4.5 out of 5

| | |
|----------------------|-------------|
| Language | : English |
| File size | : 6297 KB |
| Text-to-Speech | : Enabled |
| Screen Reader | : Supported |
| Enhanced typesetting | : Enabled |
| Word Wise | : Enabled |
| Print length | : 157 pages |

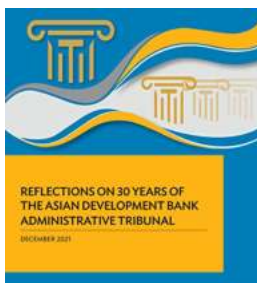


These guidelines were developed through the collaborative efforts of the Asian Development Bank and the Municipal Department of Environmental Protection of Tbilisi City Hall. The publication aims to inform decisions that will contribute to the sustainable development of Tbilisi and give residents a better quality of life while protecting their valuable heritage and preserving the green landscape for successive generations. The guidelines recommend development features and design specifications for green space provision and identify priorities for improvements and for ensuring that limited resources are targeted at areas of most need.



Country Diagnostic Study On Long Term Care In Mongolia - A Comprehensive Analysis

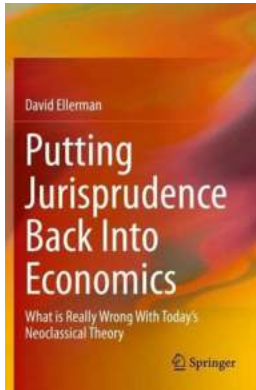
Are you curious to learn about the long-term care system in Mongolia? Look no further! In this country diagnostic study, we dive deep into the long-term care landscape of...



Reflections On 30 Years Of The Asian Development Bank Administrative Tribunal

For the past three decades, the Asian Development Bank Administrative Tribunal has played a crucial role in maintaining fairness and justice within the Asian Development Bank...





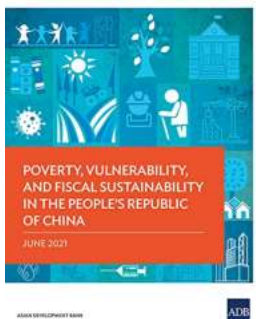
What Is Really Wrong With Today's Neoclassical Theory

The Rise and Dominance of Neoclassical Theory In the realm of economics, the neoclassical theory has reigned supreme for decades. It has been extensively...



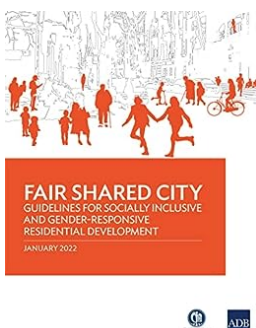
Unlocking the Potential: Incubating Indonesia's Young Entrepreneurs for a Thriving Startup Ecosystem

Indonesia, a country known for its diverse culture and stunning landscapes, is also home to a growing number of talented young entrepreneurs who are making their mark in...



Poverty Vulnerability And Fiscal Sustainability In The People Republic Of China

China, with its immense population and rapid economic growth, has made significant strides in addressing poverty and reducing vulnerability among its citizens....



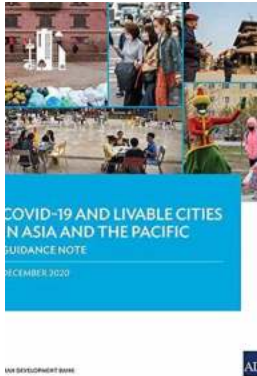
Revolutionizing Urban Living: Guidelines for Socially Inclusive and Gender-Responsive Residential Development

When it comes to shaping urban landscapes, creating socially inclusive and gender-responsive residential developments is of paramount importance. As the world becomes more...



Reaping The Benefits Of Industry Through Skills Development In Indonesia

Indonesia, with its vast potential and abundant resources, has emerged as one of the fastest-growing economies in Southeast Asia. The country's economy has been...



This is How COVID-19 is Shaping Transport in Asia and the Pacific

The global pandemic caused by COVID-19 has had a significant impact on various aspects of daily life. From social distancing measures and lockdowns to the closure of...