

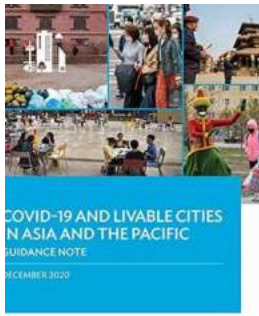
This is How COVID-19 is Shaping Transport in Asia and the Pacific



The global pandemic caused by COVID-19 has had a significant impact on various aspects of daily life. From social distancing measures and lockdowns to the closure of businesses and institutions, the effects have been felt across the globe. One area greatly affected is the transportation sector, particularly in Asia and the Pacific region. In this article, we will explore the challenges faced by the transport industry in these regions and how they have adapted to the new normal.

The Initial Blow to Transport Systems

When the novel coronavirus first emerged, countries around the world scrambled to contain its spread. Strict lockdowns were imposed, borders were closed, and travel restrictions were put in place. Public transportation services came to a grinding halt as people were urged to stay home and avoid unnecessary travel.



COVID-19 and Transport in Asia and the Pacific: Guidance Note (COVID-19 in Asia and the Pacific Guidance Notes) by Asian Development Bank (Kindle Edition)

★★★★★ 5 out of 5

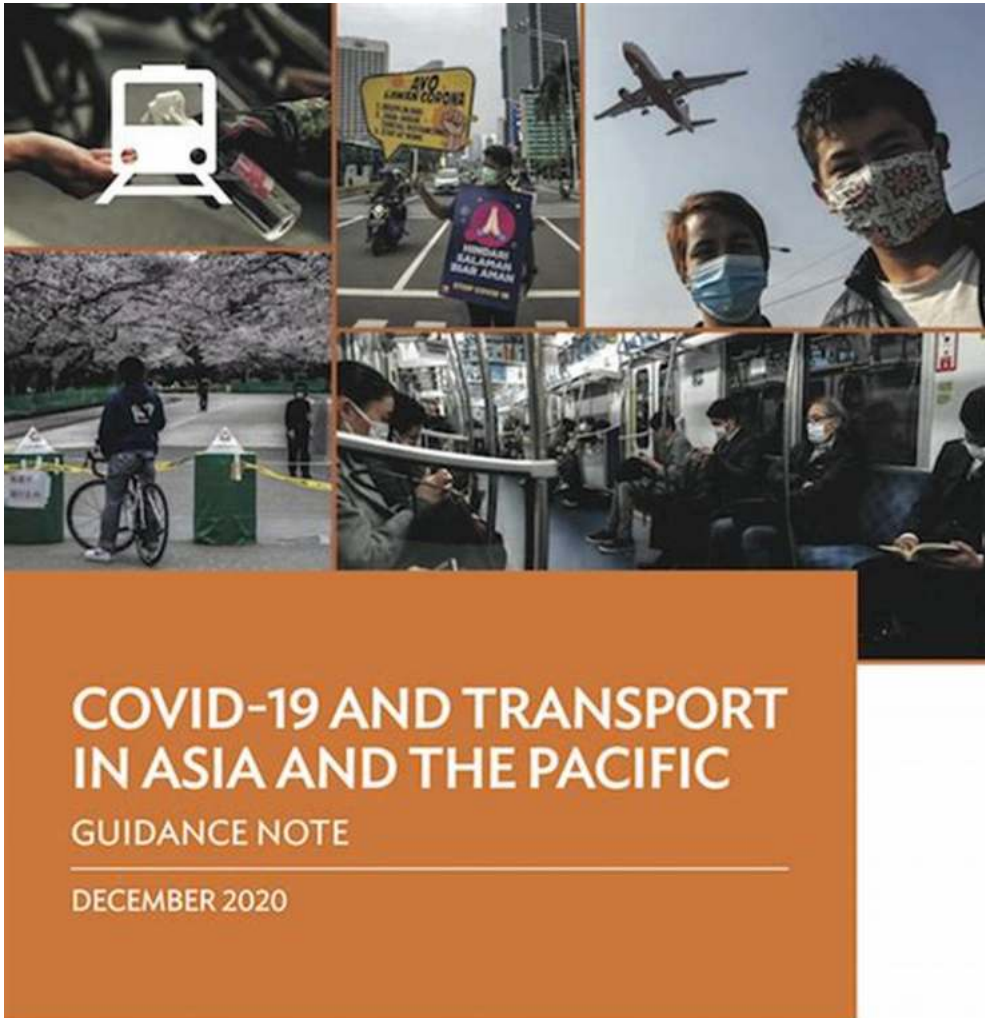
Language : English
File size : 23211 KB
Text-to-Speech : Enabled
Screen Reader : Supported
Enhanced typesetting : Enabled
Word Wise : Enabled
Print length : 111 pages



Asia and the Pacific, being home to some of the busiest transportation hubs in the world, felt the impact quite strongly. Countries like China, South Korea, and Japan, which rely heavily on public transportation, saw a drastic decrease in ridership. Airlines grounded their fleets, trains remained idle at stations, and buses stood still in depots.

The Rise of Essential Transport Services

While most non-essential travel was put on hold, certain modes of transport became crucial in providing essential services. Government and healthcare officials needed to ensure the transportation of medical supplies, emergency responders, and essential workers throughout the region.



COVID-19 AND TRANSPORT IN ASIA AND THE PACIFIC

GUIDANCE NOTE

DECEMBER 2020

ASIAN DEVELOPMENT BANK



Airlines repurposed their planes to operate cargo flights, transporting medical equipment and supplies to affected areas. They also facilitated the return of citizens stranded abroad. Similarly, shipping companies worked tirelessly to maintain global trade by delivering goods and supplies to keep economies afloat.

As public transportation services started to gradually resume, strict safety measures were implemented to safeguard passengers and staff. Masks became

mandatory, temperature screening methods were introduced, and capacity limits were imposed to ensure social distancing.

Impact on Urban Transport

The pandemic has forced many people to reconsider their commuting habits and modes of transport. With the fear of crowded spaces and exposure to the virus, individuals have shown an increasing interest in private vehicles, cycling, and walking for their daily travel needs.



COVID-19 AND TRANSPORT IN ASIA AND THE PACIFIC

GUIDANCE NOTE

DECEMBER 2020

Cities across Asia and the Pacific have taken this opportunity to invest in infrastructure that supports alternative modes of transport. Bike lanes have been expanded, pedestrian-friendly zones have been created, and shared mobility services like bike-sharing and e-scooters have gained popularity.

To meet the demands of physical distancing, many public transportation systems have adopted innovative measures such as contactless payment systems, real-time occupancy data, and improved ventilation systems to enhance passenger safety and regain public trust.

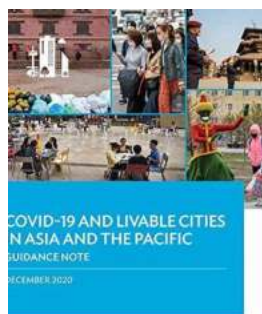
The Future of Transport in Post-COVID Asia and the Pacific

As the pandemic continues, the transport industry in Asia and the Pacific faces numerous challenges and uncertainties. The recovery of international travel largely depends on the development and distribution of vaccines. Governments and businesses must work together to restore public confidence in travel and tourism.

However, the crisis also presents an opportunity to reimagine and improve transport systems for a more sustainable future. The pandemic has shown the importance of resilience and adaptability in transportation. Investments in green technologies and low-carbon modes of transport can help reduce pollution, improve air quality, and mitigate the impact of future health crises.

The COVID-19 pandemic has undoubtedly transformed the transport sector in Asia and the Pacific. While it has brought immense challenges, it has also pushed for innovation and positive changes that will shape the future of transportation in these regions. As we move forward, it is crucial to prioritize the

health and well-being of passengers and transportation workers while fostering a resilient and sustainable transport system.



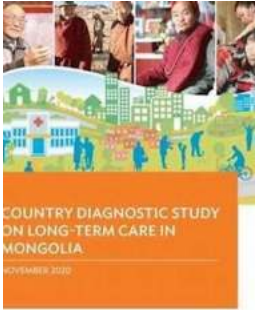
COVID-19 and Transport in Asia and the Pacific: Guidance Note (COVID-19 in Asia and the Pacific Guidance Notes) by Asian Development Bank (Kindle Edition)

★★★★★ 5 out of 5

Language : English
File size : 23211 KB
Text-to-Speech : Enabled
Screen Reader : Supported
Enhanced typesetting : Enabled
Word Wise : Enabled
Print length : 111 pages



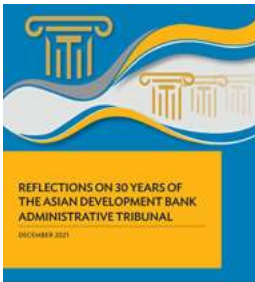
The economic and social impacts of the coronavirus disease (COVID-19) have been dramatic, and transport has played a central role in its spread. The transport sector has also enabled essential workers to get to work during the pandemic and will support the needs of the population throughout the different stages of recovery. This guidance note presents (i) the impacts of the pandemic on social and travel behaviors in Asia and the Pacific, and how the transport sector is responding; and (ii) guiding principles and good practices in transport operations to support economic recovery.



Country Diagnostic Study On Long Term Care In Mongolia - A Comprehensive Analysis

Are you curious to learn about the long-term care system in Mongolia? Look no further! In this country diagnostic study, we dive deep into the long-term care landscape of...

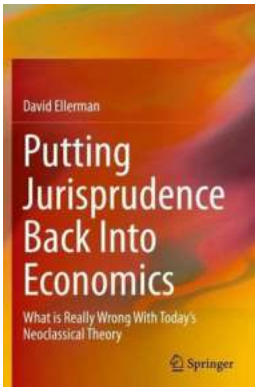
ASIAN DEVELOPMENT BANK



Reflections On 30 Years Of The Asian Development Bank Administrative Tribunal

For the past three decades, the Asian Development Bank Administrative Tribunal has played a crucial role in maintaining fairness and justice within the Asian Development Bank...

ASIAN DEVELOPMENT BANK



What Is Really Wrong With Today's Neoclassical Theory

The Rise and Dominance of Neoclassical Theory In the realm of economics, the neoclassical theory has reigned supreme for decades. It has been extensively...

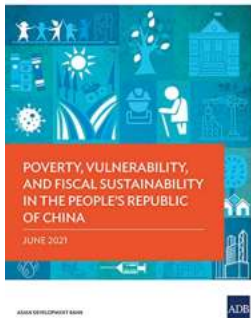


Unlocking the Potential: Incubating Indonesia's Young Entrepreneurs for a Thriving Startup Ecosystem

Indonesia, a country known for its diverse culture and stunning landscapes, is also home to a growing number of talented young entrepreneurs who are making their mark in...

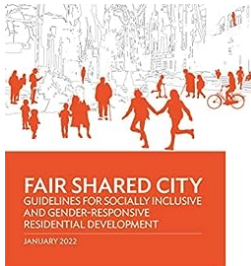
ASIAN DEVELOPMENT BANK





Poverty Vulnerability And Fiscal Sustainability In The People Republic Of China

China, with its immense population and rapid economic growth, has made significant strides in addressing poverty and reducing vulnerability among its citizens....



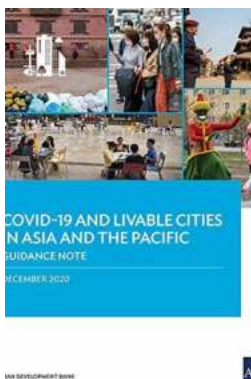
Revolutionizing Urban Living: Guidelines for Socially Inclusive and Gender-Responsive Residential Development

When it comes to shaping urban landscapes, creating socially inclusive and gender-responsive residential developments is of paramount importance. As the world becomes more...



Reaping The Benefits Of Industry Through Skills Development In Indonesia

Indonesia, with its vast potential and abundant resources, has emerged as one of the fastest-growing economies in Southeast Asia. The country's economy has been...



This is How COVID-19 is Shaping Transport in Asia and the Pacific

The global pandemic caused by COVID-19 has had a significant impact on various aspects of daily life. From social distancing measures and lockdowns to the closure of...