

The Impact of Social Determinants of Health on Individuals

Social determinants of health are the conditions in which people are born, grow, live, work, and age. These factors have a significant influence on a person's overall well-being and can even determine their chances of experiencing health issues. Understanding the impact of social determinants of health is crucial for policymakers and healthcare professionals to address inequalities and promote healthier communities.

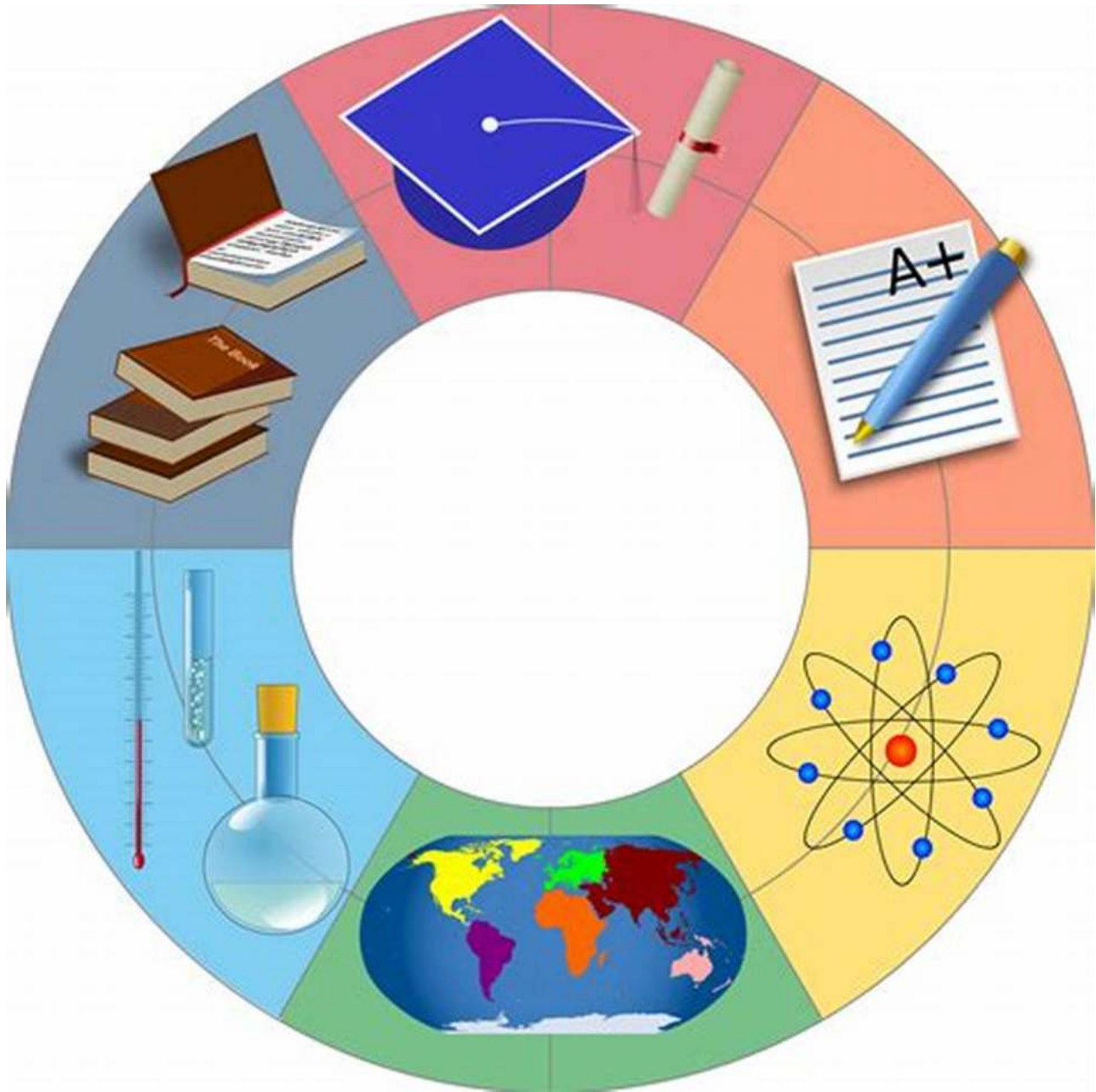
Poverty and Income Inequality

One of the most critical social determinants of health is poverty and income inequality. People living in poverty often face multiple challenges such as limited access to education, nutritious food, and healthcare services. This lack of resources can lead to higher rates of chronic diseases and mental health issues. Additionally, income inequality exacerbates these problems, as it creates disparities in opportunities for individuals to improve their living conditions and access necessary healthcare.

increased risk of chronic diseases like diabetes and heart disease, and greater mental health problems. Socioeconomic factors also influence access to healthcare and the ability to afford necessary medications, resulting in delayed or inadequate treatment.

Education and Literacy

Access to quality education and the ability to read and understand health-related information profoundly impact health outcomes. Individuals with lower educational attainment often lack the knowledge and skills needed to navigate the complex healthcare system, leading to poor health decisions and limited preventive measures. Inadequate health literacy makes it challenging to understand medication instructions, follow treatment plans, and make informed choices regarding lifestyle changes.



Furthermore, education plays a vital role in socioeconomic opportunities. People with higher education levels tend to have better job prospects, earn higher incomes, and access more comprehensive healthcare coverage. In contrast, individuals with limited education are more likely to work in low-wage jobs without health insurance, putting them at higher risk of health issues.

Community Safety and Violence

The safety of the community in which individuals live significantly affects their health outcomes. Exposure to violence, crime, and unsafe neighborhoods increases stress levels and contributes to the development of mental health problems. Additionally, individuals living in dangerous areas may refrain from engaging in physical activities outdoors, leading to a sedentary lifestyle and higher risks of obesity and chronic diseases.

“THE BIG 4”



Substance Abuse



Mental Health



Family Violence



Multigenerational Trauma



The University of Texas at Austin
Texas Institute for
Child & Family Wellbeing
School of Social Work

#NCAPM2017
#PreventionMonth

When communities lack adequate safety measures, individuals can also experience limited access to healthcare facilities. Healthcare providers may be reluctant to establish clinics or hospitals in high-crime areas, forcing residents to travel longer distances for medical care. This can result in delayed diagnoses, inadequate treatment, and poorer health outcomes for individuals living in these communities.

Access to Healthcare Services

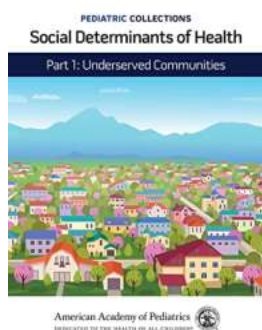
Healthcare access disparities based on race, ethnicity, and geographical location are significant social determinants of health. Minority groups often face challenges in accessing quality healthcare due to systemic barriers, including racial discrimination and implicit biases. Limited access to healthcare services can lead to delayed diagnoses, inadequate treatment, and poorer overall health outcomes.

Universal access to health services, including sexual and reproductive health services, is a
human right



Rural communities also face unique challenges in accessing healthcare services. The scarcity of healthcare providers and facilities in rural areas can result in limited options for preventative care and specialized treatments. This leads to higher rates of chronic diseases and poorer health outcomes compared to urban areas.

Social determinants of health have a profound impact on an individual's well-being and can determine their health outcomes. Poverty and income inequality, education and literacy, community safety, and access to healthcare services are critical factors that significantly influence an individual's health. By understanding these determinants and addressing the underlying social and economic factors, policymakers and healthcare professionals can work towards reducing health disparities, promoting healthier communities, and ensuring equitable access to healthcare for all individuals.



Pediatric Collections: Social Determinants of Health - Part 1: Underserved Communities

by American Academy of Pediatrics ([Print Replica] Kindle Edition)

★★★★☆ 4 out of 5

Language : English

File size : 12248 KB

Screen Reader : Supported

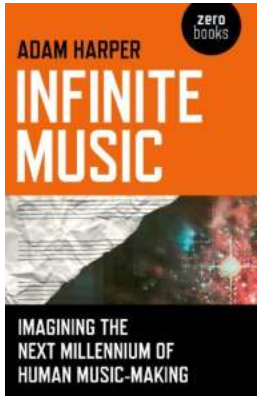
Print length : 150 pages



Pediatric Collections offers what you need to know - original, focused research in a snapshot approach.

Youths who are negatively affected by social determinants of health suffer adverse effects like increased risks of chronic health conditions and mental health issues. Part 1 of this series describes many underserved communities and the various ways their status affects their health. Members of these vulnerable communities include foster children, runaway youths, immigrants, Black, Latinx, Native American, and other children from minority racial groups, LGBTQ+ youths, and children living in poverty. This collection describes the challenges faced by

each of these populations and how that adversity shapes their present and future health.



Imagining The Next Millennium Of Human Music Making

The Evolution of Music Throughout history, music has been an integral part of human culture and expression. From ancient tribal chants to classical symphonies,...



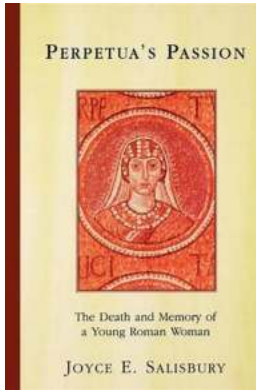
Say You Hate Me Love At Work - Can Love Blossom in the Office?

Working in an office can be a tedious and monotonous experience, but what happens when sparks start to fly between colleagues? Can love truly blossom in the workplace, or is...



Hilarious Life Affirming And Guaranteed To Make You Smile

Life can sometimes get overwhelming. Whether it's work stress, personal struggles, or simply the fast-paced nature of our modern lives, we all need a break from time...



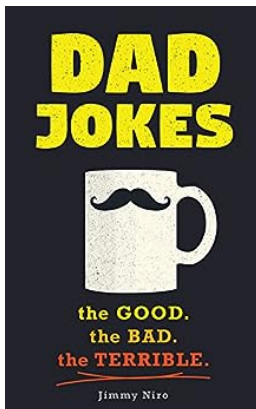
The Death And Memory Of Young Roman Woman: A Tragic Tale of Love and Loss

In the ancient city of Rome, where history and romance intertwined, lived a young woman whose life and death would leave a lasting impression on the memories of those who knew...



Karma Dirty Secrets Memoir: Unveiling the Untold Story of Alice Young

They say that revenge is a dish best served cold, but what if that dish was slowly simmered on the flames of karma itself? Today, we delve into the jaw-dropping pages of...



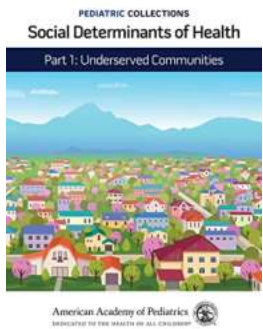
Over 600 Of The Best Worst Jokes Around And Perfect Father's Day Gift World Best

Are you ready to laugh out loud and make your dad's day extra special this Father's Day? Look no further! We have gathered over 600 of the best worst jokes that...



Unlocking the Surprising World of Animal Creativity and Innovation

When we think of creativity and innovation, our minds often conjure up images of human inventors, artists, and thinkers. But what if I told you that the animal kingdom is...



The Impact of Social Determinants of Health on Individuals

Social determinants of health are the conditions in which people are born, grow, live, work, and age. These factors have a significant influence on a person's overall...