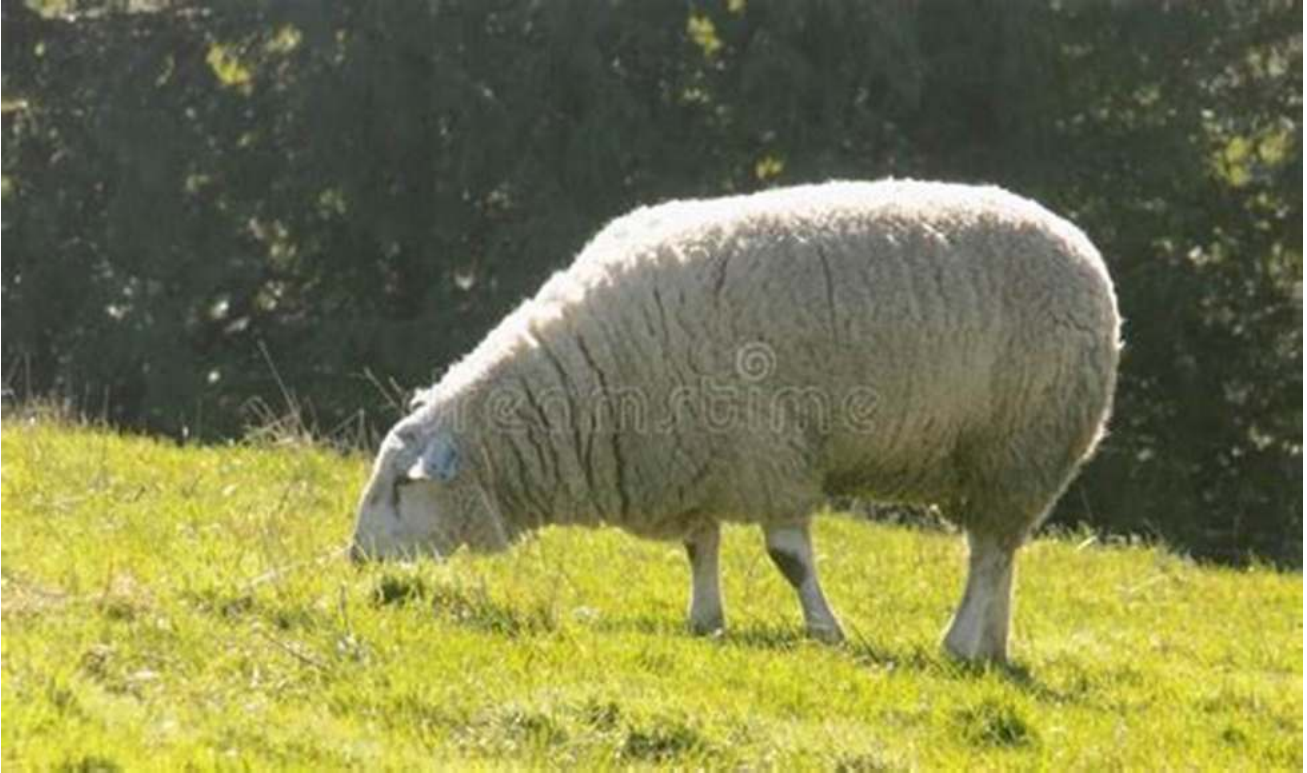
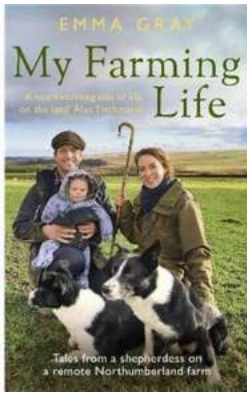


Tales From Shepherdess On Remote Northumberland Farm



A remote farm nestled in the scenic countryside of Northumberland has become the backdrop for a remarkable story of perseverance, resilience, and love for nature. Jill Peterson, a passionate shepherdess, has been working tirelessly to maintain her farm and preserve the unique heritage of the region.

Located far away from the urban hustle and bustle, Jill's farm transports you to a world of tranquility and simplicity. As you step foot on the rolling green hills, you can feel the connection between humanity and nature strengthen. A symphony of bleats and birdsong fills the air, while the vibrant colors of wildflowers paint the landscape.



My Farming Life: Tales from a shepherdess on a remote Northumberland farm

by Emma Gray (Kindle Edition)

★★★★☆ 4.8 out of 5

Language : English

File size : 1306 KB

Text-to-Speech : Enabled

Screen Reader : Supported

Enhanced typesetting : Enabled

Word Wise : Enabled

Print length : 254 pages



Jill's journey as a shepherdess began after she inherited the farm from her parents. Determined to carry on their legacy and passionate about sustainable farming, she decided to immerse herself fully in the world of sheep farming. With sheer determination and a wealth of knowledge passed down from previous generations, Jill embarked on her adventure.

A day in the life of a shepherdess is far from ordinary. Each morning, as the sun rises over the horizon, Jill sets out on her trusted border collie, Jess, beside her. Together, they navigate the rugged terrain, managing and caring for the flock. Countless hours are spent tending to the sheep, ensuring they have access to fresh water, nutritious food, and adequate shelter.

The bond between Jill and her sheep is incredibly strong. She knows every individual by name, recognizing their unique personalities and traits. Shepherding isn't just a job to her; it's a way of life. The welfare of her flock is paramount, and she works tirelessly to protect and nurture them.

This remote farm serves as a sanctuary for not only the sheep but also an array of wildlife. Northumberland's diverse landscape attracts a myriad of species, from rabbits and hedgehogs to soaring birds of prey. Jill has made it her mission to create a thriving ecosystem, preserving the delicate balance between predator and prey.

Despite the challenges she faces, Jill's love for her farm and the natural world keeps her going. Living in such remoteness comes with its fair share of hurdles, including limited access to amenities and solitude. Yet, Jill has found solace and fulfillment in her surroundings.

The harsh winter months bring an added layer of difficulty, as the snow-laden landscape poses a threat to both the flock and Jill's farming routine. However, her resilience shines through even in the toughest conditions. She perseveres, adapting her methods to ensure the sheep's well-being and survival.

As the seasons change, so does the farm's landscape. A vibrant tapestry of colors transforms the hills, with blooming wildflowers and golden fields. The annual migration of birds overhead signals the arrival of spring, lending a sense of renewal and hope to Jill's endeavors.

Visitors from far and wide are always welcomed with open arms. Jill enjoys sharing her world with others, educating them about sustainable farming practices and the importance of reconnecting with nature. It is through these interactions that she realizes the impact her work has on inspiring others to appreciate and protect the environment.

Tales from this remote Northumberland farm are not just about the challenges and triumphs of shepherding but also the deep connection we as humans have with nature. In a world dominated by technology and fast-paced living, Jill's story

serves as a reminder of the beauty and simplicity that can be found in reestablishing our bond with the natural world.

So, the next time you find yourself yearning for a break from the chaos of modern life, consider venturing to this remote farm in Northumberland. Experience the magic that comes from witnessing the harmony between humans, animals, and nature. Hear the tales from the shepherdess herself and allow her passion to ignite a similar love for the environment within you.

Remember, the path less traveled often leads to the most extraordinary discoveries.



My Farming Life: Tales from a shepherdess on a remote Northumberland farm

by Emma Gray (Kindle Edition)

★★★★☆ 4.8 out of 5

Language : English
File size : 1306 KB
Text-to-Speech : Enabled
Screen Reader : Supported
Enhanced typesetting : Enabled
Word Wise : Enabled
Print length : 254 pages



AS SEEN ON BBC TWO'S HIT TV-SHOW 'THIS FARMING LIFE'

'A heartwarming tale of life on the land' Alan Titchmarsh

'There's love and loss, challenge and adversity, but above all it's warm, insightful and inspiring' Helen Skelton

'Will inspire any reader to look at the countryside - and all those who work there - with newfound appreciation' Jimmy Doherty

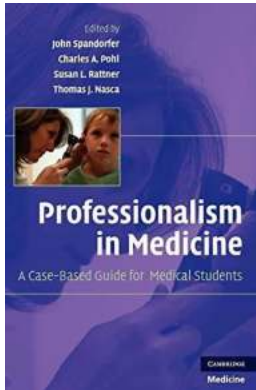
'Uplifting, charming and beautifully written' Adam Henson

Emma Gray was just twenty-three when she moved to an isolated farm in Northumberland, becoming Britain's youngest solo shepherdess. In the seasons that followed, Emma fell in love with its rolling fields, surrounding forest and sturdy farmhouse, tending her sheep and training her dogs - and even found romance.

But when Emma finds herself suddenly alone again, heartbroken and recovering from a serious accident, she wonders if her isolated existence is still such a sensible idea. Even if she recovers, how could she make a proper living on Fallowlees Farm?

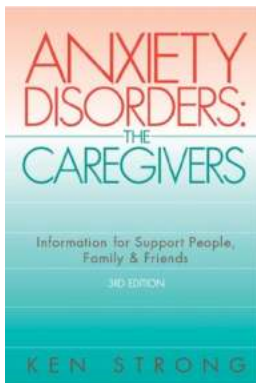
In her heartwarming book, Emma tells the story of how she picked herself up and expanded her cattle herd, added more horses to her menagerie, and became one of the country's most successful breeders and trainers of Border Collies - unexpectedly discovering true love and lasting happiness along the way.

Written with warmth and humour, *My Farming Life* is a joyous celebration of nature and community, and a delight for anyone who's ever dreamed of living closer to the countryside.



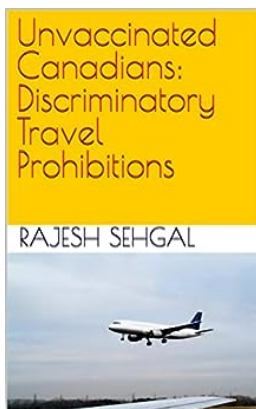
Unlocking Success: The Ultimate Case Based Guide for Medical Students

As a medical student, navigating through complex cases can be both challenging and overwhelming. Each patient brings a unique set of symptoms, medical history, and...



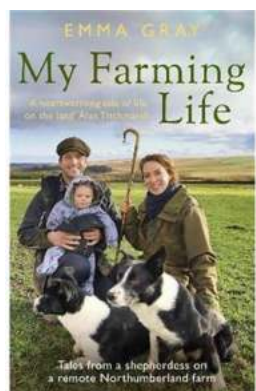
Anxiety Disorders: The Caregivers George Hutton

Anxiety disorders affect millions of people worldwide and can have a significant impact on their daily lives. While there are several treatment options available, it is...



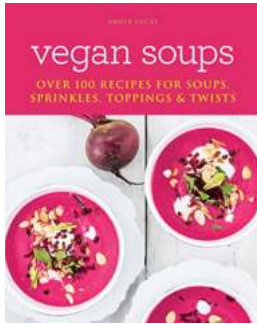
Unvaccinated Canadians Discriminatory Travel Prohibitions

As the world gradually recovers from the devastating impact of the COVID-19 pandemic, discussions surrounding the return to normalcy have shifted towards vaccination efforts....



Tales From Shepheress On Remote Northumberland Farm

A remote farm nestled in the scenic countryside of Northumberland has become the backdrop for a remarkable story of perseverance, resilience, and love for nature. Jill...



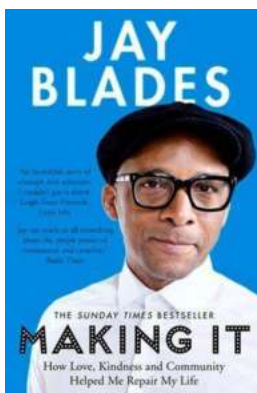
Discover Over 100 Mouthwatering Recipes for Soups with Sprinkles, Toppings, and Unique Twists!

Are you tired of serving the same old soups? Do you want to elevate your culinary skills and impress your family and friends with exciting new flavors? Look no further! This...



Complete Kitten Care: Everything You Need to Know for a Happy and Healthy Kitten

If you're a proud new kitten parent or are considering bringing home a furry bundle of joy, then you've come to the right place. Here, we will delve into the world of...



How Love, Kindness, and Community Helped Me Repair My Life

Do you believe in the power of love? Can kindness heal deep wounds? How about the impact of a supportive community? These questions have been at the forefront of my journey,...



Art Without Compromise: Discovering the World of Wendy Richmond

Art has always been a form of expression, allowing artists to convey their emotions, thoughts, and perspectives through creative means. However, following...

