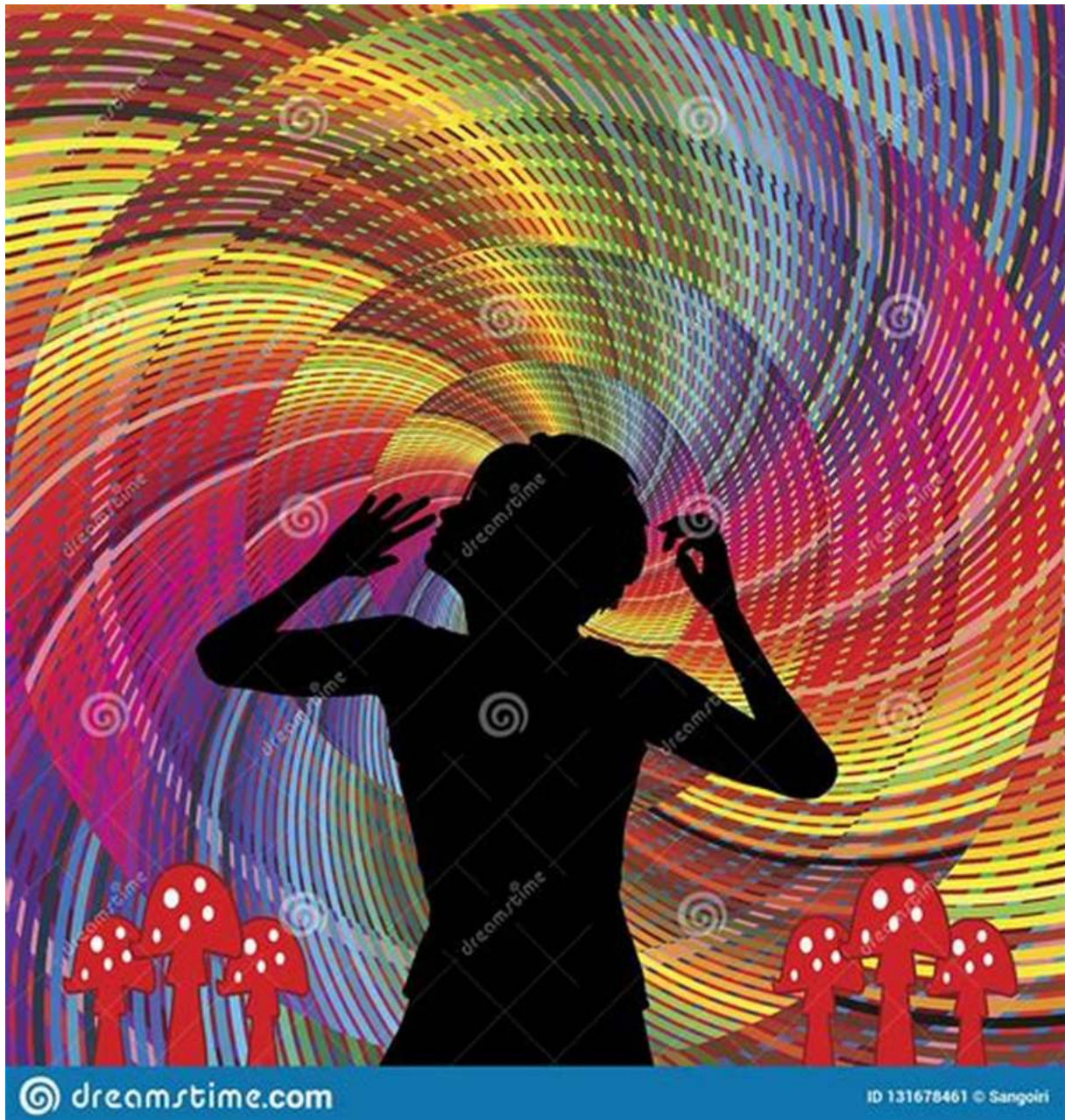


# Set Setting And The Psychedelic Experience In The Twentieth Century: Exploring the Mind- Altering Journey

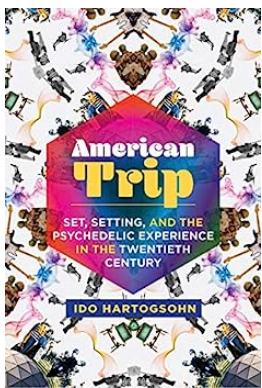


The twentieth century witnessed a profound shift in the way individuals approached altered states of consciousness. From the emergence of mind-

altering substances to the exploration of new dimensions of human perception, the psychedelic experience captivated the minds of many.

## Understanding Set and Setting

In the realm of psychedelics, the concept of "set and setting" gained significant recognition. Derived from the work of Dr. Timothy Leary, an influential figure in the field of psychedelia, set and setting refer to the mindset and physical environment in which a psychedelic experience takes place.



### American Trip: Set, Setting, and the Psychedelic Experience in the Twentieth Century

by Ido Hartogsohn (Kindle Edition)

★★★★☆ 4.7 out of 5

Language : English  
File size : 1221 KB  
Text-to-Speech : Enabled  
Screen Reader : Supported  
Enhanced typesetting : Enabled  
Word Wise : Enabled  
Print length : 417 pages  
X-Ray : Enabled



The "set" denotes the mental state of the individual undergoing the experience. It encompasses their intentions, expectations, previous experiences, emotions, and even personality traits. One's set greatly influences the nature and depth of the journey within the psychedelic realm.

On the other hand, "setting" pertains to the external factors that shape the experience, such as the physical surroundings, the presence of other individuals,

the atmosphere, and the general ambiance. The setting plays a crucial role in providing a conducive environment for the individual to navigate the uncharted territory of their own consciousness.

## **The Birth of Psychedelics**

The history of psychedelics traces back to the early 20th century when Swiss chemist Albert Hofmann accidentally discovered LSD (lysergic acid diethylamide) in 1938. Subsequently, in the 1940s and 1950s, LSD and other hallucinogenic substances began to attract the attention of researchers and psychologists interested in unlocking the mysteries of the human mind.

However, it was around the 1960s that psychedelics gained widespread popularity, largely due to the countercultural movement and the emergence of "psychedelic rock" music. Figures such as Timothy Leary and Aldous Huxley advocated for the use of psychedelics as a means of spiritual exploration and self-discovery.

## **The Power of the Psychedelic Experience**

The psychedelic experience itself is a deeply personal and subjective journey. It can offer profound moments of introspection, self-reflection, and even transcendence. Many individuals have reported mystical and spiritual experiences during their psychedelic trips, where they feel a deep connection with the universe and gain insights into the nature of reality.

While the effects of psychedelics can vary significantly from person to person, common themes have emerged from numerous accounts. These include a heightened sense of perception, synesthesia (blurring sensory boundaries), ego dissolution, and an intensified emotional and sensory experience.

## **The Influence on Art, Music, and Culture**

The impact of the psychedelic experience on art, music, and culture cannot be overstated. It influenced various artistic movements, such as surrealism, pop art, and psychedelic rock. Artists like Salvador Dali, Andy Warhol, and Jimi Hendrix drew inspiration from their encounters with altered states of consciousness.

Psychedelic music, characterized by its swirling sounds, intricate compositions, and mystical themes, became a symbol of the countercultural movement. Bands like The Beatles, Pink Floyd, and Jefferson Airplane utilized innovative soundscapes and lyrics to create mind-expanding journeys for their listeners.

## **The Evolution of Set and Setting**

Over time, the understanding and application of set and setting have evolved. Numerous studies have focused on optimizing the psychedelic experience by carefully curating one's set and setting. Researchers have explored the integration of music, nature, and therapeutic settings to enhance the therapeutic potential of psychedelics.

The recognition of the importance of set and setting has also influenced the approach of medical professionals and therapists who are now incorporating psychedelics into innovative methods of treatment for various mental health conditions, such as depression, PTSD, and addiction.

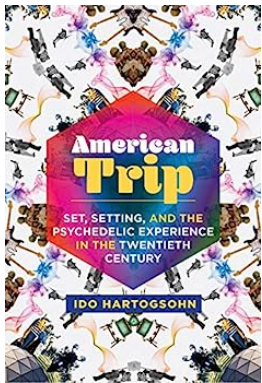
## **The Future of the Psychedelic Experience**

As we step into the twenty-first century, the psychedelic experience continues its journey of exploration. Research is ongoing, aiming to unlock the therapeutic potential of psychedelics while ensuring safety and responsible use.

Advancements in technology have allowed for the development of more precise and controlled methods of administering psychedelics, such as Microdosing and

the use of Virtual Reality. These approaches provide unique opportunities for individuals to delve into their consciousness in a controlled and guided manner.

In , the twentieth century was a pivotal era for the psychedelic experience. Set and setting became fundamental concepts in navigating the mind-altering journey, and the impact on art, music, and culture was profound. As we move forward, we continue to unravel the mysteries of the human mind and explore the therapeutic potential of psychedelics, while honoring the rich history and lessons of the past.



## American Trip: Set, Setting, and the Psychedelic Experience in the Twentieth Century

by Ido Hartogsohn (Kindle Edition)

★★★★☆ 4.7 out of 5

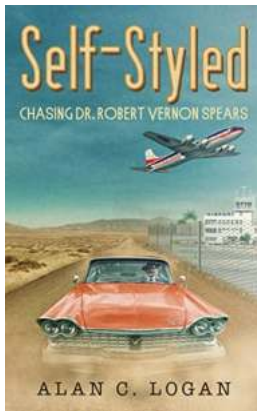
Language	: English
File size	: 1221 KB
Text-to-Speech	: Enabled
Screen Reader	: Supported
Enhanced typesetting	: Enabled
Word Wise	: Enabled
Print length	: 417 pages
X-Ray	: Enabled



How historical, social, and cultural forces shaped the psychedelic experience in midcentury America, from CIA experiments with LSD to Timothy Leary's Harvard Psilocybin Project.

Are psychedelics invaluable therapeutic medicines, or dangerously unpredictable drugs that precipitate psychosis? Tools for spiritual communion or cognitive enhancers that spark innovation? Activators for one's private muse or part of a

political movement? In the 1950s and 1960s, researchers studied psychedelics in all these incarnations, often arriving at contradictory results. In American Trip, Ido Hartogsohn examines how the psychedelic experience in midcentury America was shaped by historical, social, and cultural forces--by set (the mindset of the user) and setting (the environments in which the experience takes place).



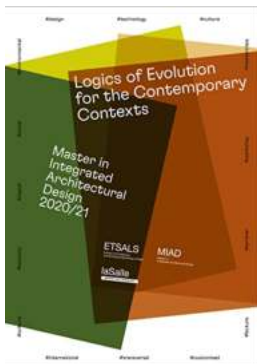
## **Self Styled Chasing Dr Robert Vernon Spears - The Untold Story Revealed!**

Have you ever wondered what drives those extraordinary individuals who chase their dreams relentlessly? Meet Dr. Robert Vernon Spears, the man who has taken the world by...



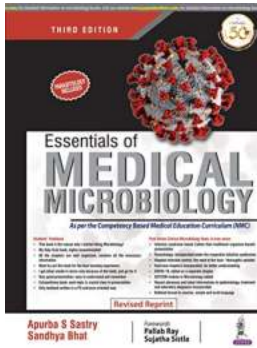
## **The Ultimate Guide to Mastering Microsoft Office 365 Excel 2019 Comprehensive Mindtap Course List**

Microsoft Office has long been a staple in the world of productivity software, and Excel has undoubtedly emerged as one of its most powerful tools. With its countless features...



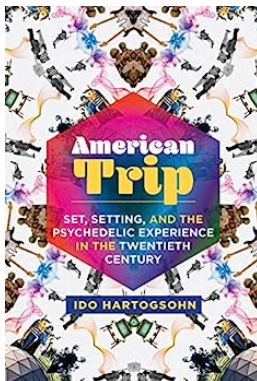
## **The Astonishing Logics of Evolution: Thriving in Contemporary Contexts**

Evolution, a phenomenon encompassing the adaptation and development of species, is a captivating realm that explores the intricate mechanisms behind life's diversity....



## Essentials Of Medical Microbiology Apurba Sastry: Unlocking the Secrets of Disease-causing Microorganisms

The field of medical microbiology plays a crucial role in understanding and combating various infectious diseases that afflict humankind. With the continuous emergence of...



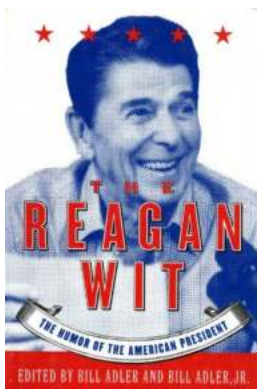
## Set Setting And The Psychedelic Experience In The Twentieth Century: Exploring the Mind-Altering Journey

The twentieth century witnessed a profound shift in the way individuals approached altered states of consciousness. From the emergence of mind-altering...



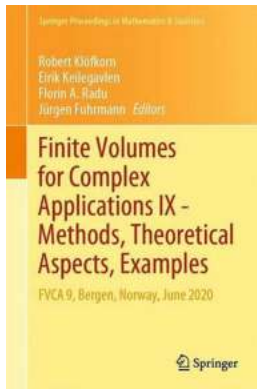
## The Future of Electronics: Exploring the Advancements in Thin Film Transistor Circuits And Systems

In today's rapidly evolving digital landscape, the demand for efficient and compact electronic devices has never been greater. One of the key...



## The Hilarious Side of the Oval Office: The Humor Of The American President that will Leave You in Stitches!

When we think about the American President, humor might not be the first thing that comes to mind. However, throughout history, many presidents have showcased their wit and...



## The Ultimate Guide to Fvca Bergen Norway June 2020: Springer Proceedings In Mathematics and Statistics 323

Welcome to the enchanting city of Bergen, located on the western coast of Norway. This June, the city is going to host a groundbreaking event – the Fvca Bergen Norway June...

american trip set setting and the psychedelic experience in the twentieth century