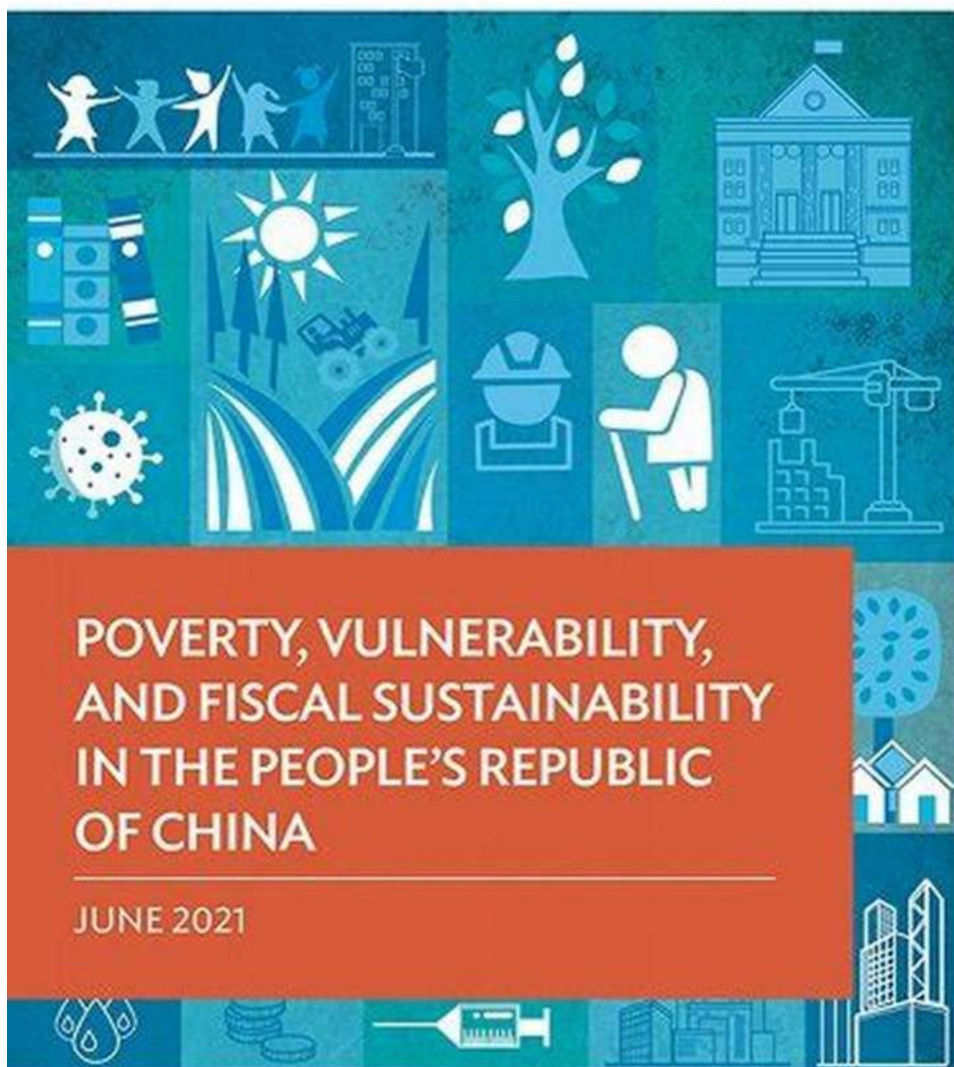


Poverty Vulnerability And Fiscal Sustainability In The People Republic Of China



ASIAN DEVELOPMENT BANK

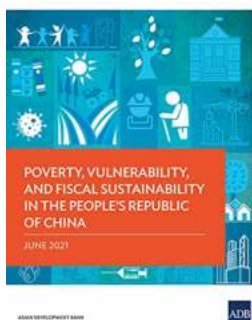


China, with its immense population and rapid economic growth, has made significant strides in addressing poverty and reducing vulnerability among its citizens. However, despite the progress, there are still concerns about the sustainability of these efforts from a fiscal perspective. This article explores the

challenges and potential solutions related to poverty vulnerability and fiscal sustainability in the People's Republic of China.

The Scale of Poverty in China

China's sheer population size presents unique challenges in addressing poverty. At the start of the 21st century, it was estimated that around 400 million Chinese citizens were living below the poverty line. This number has significantly decreased over the years, largely due to the implementation of poverty alleviation programs and economic reforms.



Poverty, Vulnerability, and Fiscal Sustainability in the People's Republic of China

by Asian Development Bank (Kindle Edition)

★★★★☆ 4.4 out of 5

Language : English

File size : 21678 KB

Text-to-Speech : Enabled

Screen Reader : Supported

Enhanced typesetting : Enabled

Word Wise : Enabled

Print length : 219 pages



However, poverty still exists in certain areas, particularly rural regions, where access to resources and opportunities may be limited. These regions are characterized by low income levels, inadequate infrastructure, and a lack of basic services. Targeting poverty vulnerability in these areas is crucial to achieving sustainable development.

Poverty Vulnerability and Inequality

While progress has been made in reducing poverty, vulnerability to falling back into poverty remains a concern. Various factors contribute to poverty vulnerability, including limited access to education, healthcare, and employment opportunities. Additionally, natural disasters, such as floods and droughts, often disproportionately affect vulnerable populations, exacerbating their poverty conditions.

Inequality also plays a significant role in poverty vulnerability. The urban-rural divide in China has created disparities in income and access to resources. Rural communities, in particular, face challenges in accessing quality education and healthcare services. This inequality perpetuates the cycle of poverty and undermines long-term fiscal sustainability.

Fiscal Sustainability and Poverty Alleviation

The government of China has implemented several poverty alleviation programs to address these challenges. These programs focus on improving infrastructure, promoting education, and providing social assistance to vulnerable populations. However, ensuring the long-term sustainability of these efforts remains a priority.

Fiscal sustainability entails maintaining a balance between government revenues and expenditures while ensuring adequate funding for poverty alleviation initiatives. It requires efficient resource allocation, effective public expenditure management, and sustainable economic growth.

Challenges and Potential Solutions

One key challenge to fiscal sustainability is the reliance on local government financing for poverty alleviation projects. Local governments often face budget constraints and may resort to off-budget borrowing, leading to debt sustainability concerns. Addressing this issue requires strengthening local government revenue

streams, improving fiscal accountability, and exploring innovative financing mechanisms.

Another challenge is the need for targeted interventions to address the unique vulnerabilities faced by different population segments. The diversity of poverty conditions in China calls for tailored solutions that consider factors such as geographic location, ethnic background, and age. By targeting interventions effectively, fiscal resources can be better utilized for maximum impact.

Moreover, building resilience to natural disasters is crucial for poverty vulnerability reduction. Investing in disaster risk reduction measures, such as early warning systems and infrastructure improvements, can enhance the ability of vulnerable communities to cope with shocks and prevent them from falling back into poverty.

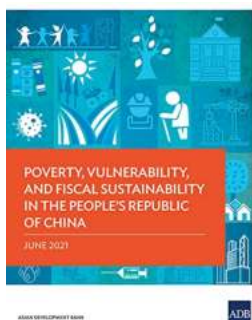
The Way Forward

To ensure sustained poverty reduction and fiscal sustainability, China needs to continue its focus on inclusive and sustainable development. This entails providing equal access to quality education, healthcare, and economic opportunities for all citizens, regardless of their location or socioeconomic background.

Investing in human capital development, promoting inclusive growth strategies, and strengthening the social protection system can contribute to long-term poverty reduction and resilience. Furthermore, enhancing coordination between central and local governments, as well as integrating poverty alleviation efforts into broader development plans, is essential for achieving fiscal sustainability in the context of poverty vulnerability.

Poverty vulnerability and fiscal sustainability are intricately linked in the People's Republic of China. While significant progress has been made in reducing poverty,

challenges persist in ensuring the sustainability of these efforts. Addressing poverty vulnerability requires targeted interventions, equitable access to resources, and measures to build resilience against shocks. By prioritizing inclusive and sustainable development, China can continue its journey towards eradicating poverty and achieving fiscal stability.



Poverty, Vulnerability, and Fiscal Sustainability in the People's Republic of China

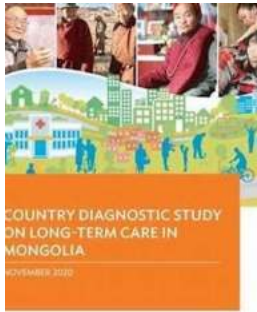
by Asian Development Bank (Kindle Edition)

★★★★☆ 4.4 out of 5

Language : English
File size : 21678 KB
Text-to-Speech : Enabled
Screen Reader : Supported
Enhanced typesetting : Enabled
Word Wise : Enabled
Print length : 219 pages



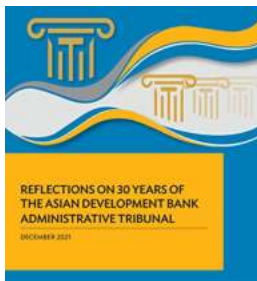
The People's Republic of China (PRC) has a long and successful record of poverty reduction. As incomes rise, the PRC's new poverty reduction strategy needs to treat poverty as multidimensional, reinvigorate rural development, develop an integrated rural–urban poverty strategy, and include the vulnerable segments of the population in poverty policy. This report delves into the questions: how much fiscal support is needed to finance social services and protection, and how much should be shouldered by individuals and households? It focuses on vulnerable groups, particularly the elderly, young children of rural migrants, and those whose access to health care is jeopardized by urbanization and aging.



Country Diagnostic Study On Long Term Care In Mongolia - A Comprehensive Analysis

Are you curious to learn about the long-term care system in Mongolia? Look no further! In this country diagnostic study, we dive deep into the long-term care landscape of...

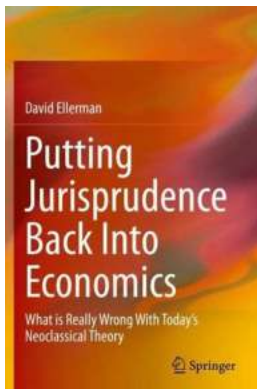
ASIAN DEVELOPMENT BANK



Reflections On 30 Years Of The Asian Development Bank Administrative Tribunal

For the past three decades, the Asian Development Bank Administrative Tribunal has played a crucial role in maintaining fairness and justice within the Asian Development Bank...

ASIAN DEVELOPMENT BANK



What Is Really Wrong With Today's Neoclassical Theory

The Rise and Dominance of Neoclassical Theory In the realm of economics, the neoclassical theory has reigned supreme for decades. It has been extensively...

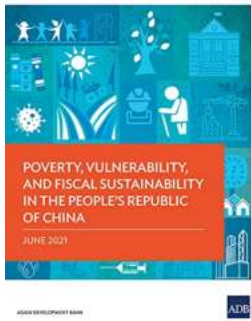


Unlocking the Potential: Incubating Indonesia's Young Entrepreneurs for a Thriving Startup Ecosystem

Indonesia, a country known for its diverse culture and stunning landscapes, is also home to a growing number of talented young entrepreneurs who are making their mark in...

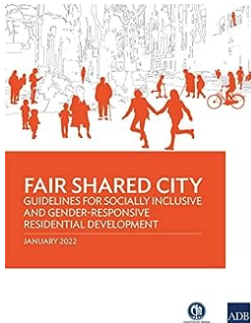
ASIAN DEVELOPMENT BANK





Poverty Vulnerability And Fiscal Sustainability In The People Republic Of China

China, with its immense population and rapid economic growth, has made significant strides in addressing poverty and reducing vulnerability among its citizens....



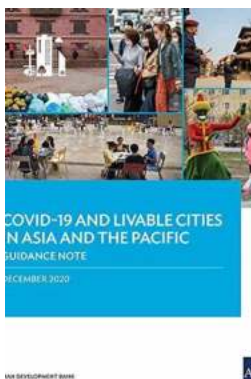
Revolutionizing Urban Living: Guidelines for Socially Inclusive and Gender-Responsive Residential Development

When it comes to shaping urban landscapes, creating socially inclusive and gender-responsive residential developments is of paramount importance. As the world becomes more...



Reaping The Benefits Of Industry Through Skills Development In Indonesia

Indonesia, with its vast potential and abundant resources, has emerged as one of the fastest-growing economies in Southeast Asia. The country's economy has been...



This is How COVID-19 is Shaping Transport in Asia and the Pacific

The global pandemic caused by COVID-19 has had a significant impact on various aspects of daily life. From social distancing measures and lockdowns to the closure of...