

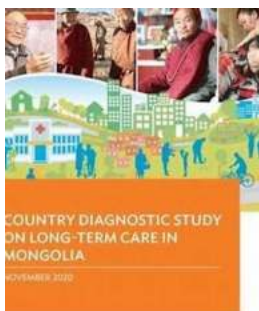
Country Diagnostic Study On Long Term Care In Mongolia - A Comprehensive Analysis

Are you curious to learn about the long-term care system in Mongolia? Look no further! In this country diagnostic study, we dive deep into the long-term care landscape of Mongolia and explore its challenges, opportunities, and potential for improvement. Buckle up and get ready for an eye-opening journey!

The Importance of Long Term Care

Long term care refers to a range of healthcare and support services provided to individuals with chronic illnesses or disabilities, usually spanning an extended period. It plays a crucial role in ensuring the well-being and quality of life for individuals who are unable to complete essential daily activities independently.

In Mongolia, as in many other countries, long term care is becoming increasingly significant due to several factors. The aging population, rising prevalence of chronic diseases, and changing family structures have all contributed to the growing need for efficient and inclusive long-term care services that can support individuals throughout their lives.



Country Diagnostic Study on Long-Term Care in Mongolia (Country Diagnostic Studies)

by Asian Development Bank (Kindle Edition)

★★★★★ 5 out of 5

Language	: English
File size	: 14441 KB
Text-to-Speech	: Enabled
Screen Reader	: Supported
Enhanced typesetting	: Enabled
Word Wise	: Enabled
Print length	: 194 pages



Long Term Care in Mongolia

In Mongolia, the long-term care system is still in its developmental stages. With limited resources and an evolving healthcare infrastructure, the country faces numerous challenges in providing adequate and comprehensive long-term care services.

Provision of long-term care primarily relies on informal caregiving within families. However, as the population ages and migration patterns change, the availability of family caregivers is gradually diminishing. This necessitates the establishment of formal long-term care services to meet the rising demand.

Key Challenges in Mongolia's Long Term Care System

1. Lack of infrastructure: Mongolia's long-term care system lacks the necessary infrastructure to support comprehensive care services. The absence of specialized care facilities and trained professionals makes it difficult to provide the required level of care.
2. Limited resources: With restricted financial resources and a small budget allocation for long-term care, Mongolia struggles to invest in the development of appropriate infrastructure and staffing capabilities.
3. Inadequate policies: Current policies related to long-term care in Mongolia are insufficient and fail to address the complex needs of individuals requiring long-term care. There is a need for comprehensive policies and regulations that can guide the establishment and operation of long-term care services.

Potential for Improvement

Despite the challenges faced, there is immense potential for improvement in Mongolia's long-term care system. Recognizing the need for change, the government has taken several steps to enhance long-term care services in the country.

1. Policy reforms: The government is actively working towards developing comprehensive policies and regulations that encompass all aspects of long-term care, including infrastructure, quality standards, and financing models. These reforms aim to create a stable and sustainable long-term care system.

2. Capacity building: Emphasis is being placed on training healthcare professionals in long-term care best practices. This includes equipping them with the necessary skills to provide personalized care and support to individuals with long-term care needs.

3. Public-private partnerships: Collaborations between the public and private sectors hold significant potential for bridging the existing gaps in long-term care provision in Mongolia. These partnerships can bring expertise, funding, and innovation to enhance the quality and availability of long-term care services.

The Way Forward

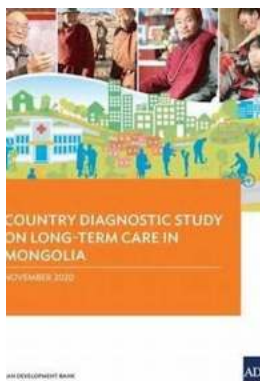
As Mongolia continues to address the challenges in its long-term care system, it is crucial to prioritize the needs of individuals requiring long-term care. This includes focusing on quality standards, accessibility, affordability, and promoting a rights-based approach that preserves the dignity and autonomy of individuals.

By investing in infrastructure development, capacity building, and policy reform, Mongolia can pave the way for a robust and inclusive long-term care system that meets the needs of its aging population and individuals with chronic illnesses.

In

The country diagnostic study on long term care in Mongolia has revealed both the challenges and the potential for improvement within the existing system. With concerted efforts and targeted strategies, Mongolia can progress towards a comprehensive and sustainable long-term care landscape that meets the needs of its citizens.

Now that you have delved into the intricacies of Mongolia's long-term care system, you have gained a deeper understanding of the challenges it faces and the steps being taken to overcome them. The journey towards an inclusive and efficient long-term care system may be long, but by working together, we can pave the way for a brighter future!



Country Diagnostic Study on Long-Term Care in Mongolia (Country Diagnostic Studies)

by Asian Development Bank (Kindle Edition)

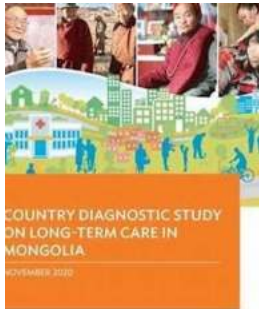
★★★★★ 5 out of 5

Language : English
File size : 14441 KB
Text-to-Speech : Enabled
Screen Reader : Supported
Enhanced typesetting : Enabled
Word Wise : Enabled
Print length : 194 pages



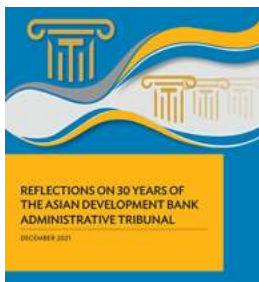
This publication presents findings of a study on the availability and provision of long-term care (LTC) in Mongolia including the need for and supply of LTC, regulatory and policy frameworks, service provision, quality management, human resources, and financing. Analysis, s, and recommendations for the development

of LTC systems in Mongolia are also included. It contributes to the development of an in-depth knowledge base on LTC policies, programs, and systems. It is one of six country diagnostic studies—the others on Indonesia, Sri Lanka, Thailand, Tonga, and Viet Nam—prepared under the Asian Development Bank technical assistance 9111: Strengthening Developing Member Countries' Capacity in Elderly Care.



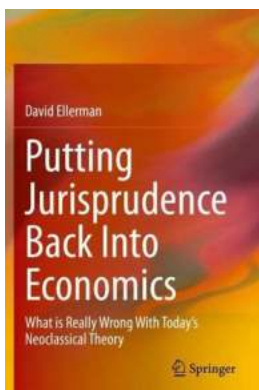
Country Diagnostic Study On Long Term Care In Mongolia - A Comprehensive Analysis

Are you curious to learn about the long-term care system in Mongolia? Look no further! In this country diagnostic study, we dive deep into the long-term care landscape of...



Reflections On 30 Years Of The Asian Development Bank Administrative Tribunal

For the past three decades, the Asian Development Bank Administrative Tribunal has played a crucial role in maintaining fairness and justice within the Asian Development Bank...



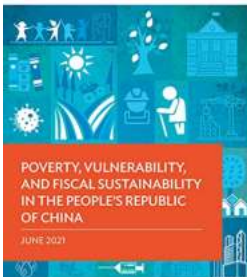
What Is Really Wrong With Today's Neoclassical Theory

The Rise and Dominance of Neoclassical Theory In the realm of economics, the neoclassical theory has reigned supreme for decades. It has been extensively...



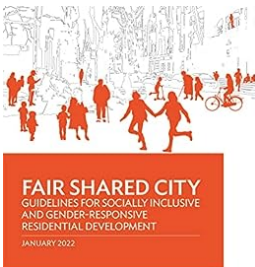
Unlocking the Potential: Incubating Indonesia's Young Entrepreneurs for a Thriving Startup Ecosystem

Indonesia, a country known for its diverse culture and stunning landscapes, is also home to a growing number of talented young entrepreneurs who are making their mark in...



Poverty Vulnerability And Fiscal Sustainability In The People Republic Of China

China, with its immense population and rapid economic growth, has made significant strides in addressing poverty and reducing vulnerability among its citizens....



Revolutionizing Urban Living: Guidelines for Socially Inclusive and Gender-Responsive Residential Development

When it comes to shaping urban landscapes, creating socially inclusive and gender-responsive residential developments is of paramount importance. As the world becomes more...



Reaping The Benefits Of Industry Through Skills Development In Indonesia

Indonesia, with its vast potential and abundant resources, has emerged as one of the fastest-growing economies in Southeast Asia. The country's economy has been...

This is How COVID-19 is Shaping Transport in Asia and the Pacific

The global pandemic caused by COVID-19 has had a significant impact on various aspects of daily life. From social distancing measures and lockdowns to the closure of...

