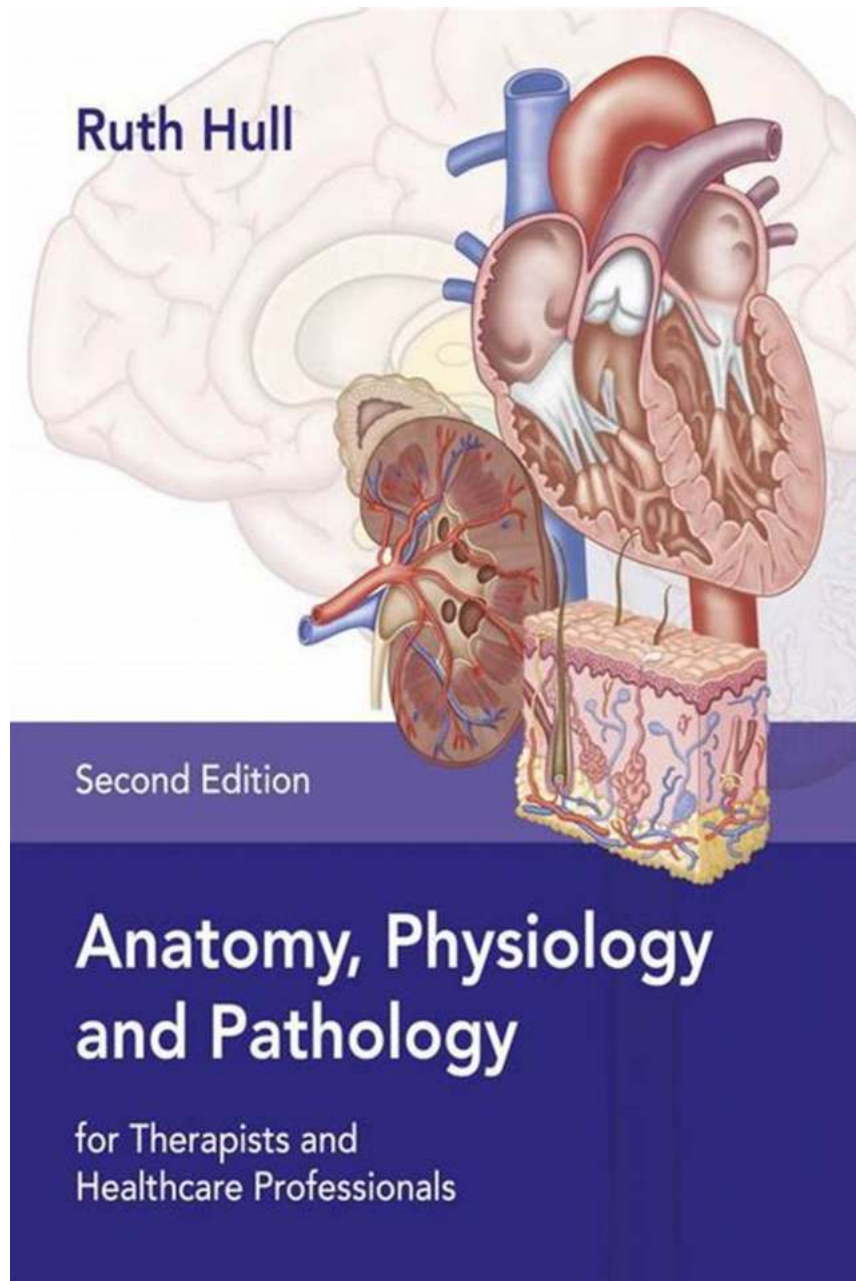


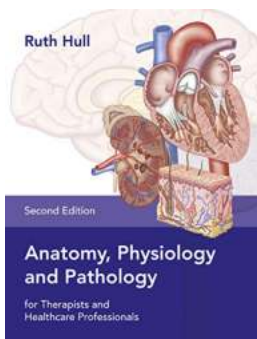
Anatomy Physiology And Pathology For Therapists And Healthcare Professionals



As therapists and healthcare professionals, understanding the intricacies of human anatomy, physiology, and pathology is essential to providing the highest quality care to patients. These fields of study lay the foundation for diagnosing, treating, and preventing a wide range of medical conditions.

The Importance of Anatomy

Anatomy is the study of the structure and organization of the body, including all its parts and their relationships. For therapists and healthcare professionals, a comprehensive understanding of anatomy is crucial. By familiarizing oneself with the various organs, systems, and tissues, professionals can accurately assess the functioning of the body and identify any abnormalities or potential health issues.



Anatomy, Physiology and Pathology for Therapists and Healthcare Professionals

by Ruth Hull (Kindle Edition)

★★★★☆ 4.8 out of 5

Language : English

File size : 76233 KB

Text-to-Speech : Enabled

Screen Reader : Supported

Enhanced typesetting : Enabled

Word Wise : Enabled

Print length : 968 pages



Physiology and Its Significance

Physiology explores the functions and mechanisms of the human body. It focuses on how different organs and systems work, enabling therapists and healthcare professionals to comprehend the body's physiological processes and responses to various stimuli. A solid grasp of physiology assists therapists in developing effective treatment plans and interventions tailored to individual patients' needs.

The Role of Pathology in Healthcare

Pathology is the study of diseases and abnormalities in the body. It encompasses understanding the causes, mechanisms, and effects of these conditions. For therapists and healthcare professionals, knowledge of pathology aids in accurate diagnoses, determining appropriate treatment approaches, and predicting potential outcomes. By recognizing pathology, professionals can address ailments promptly and enhance patient well-being.

Comprehensive Study for Professionals

Therapists and healthcare professionals undergo rigorous education and training to gain expertise in anatomy, physiology, and pathology. These subjects are typically covered extensively in their curriculum, ensuring they are well-equipped to navigate the complexities of the human body.

Exploring the Interconnections

Anatomy, physiology, and pathology are highly interconnected fields. A thorough understanding of each is crucial to establishing a comprehensive comprehension of the human body. Anatomy serves as the foundation, providing a structural roadmap. Physiology focuses on the functioning of the structures, while pathology helps identify abnormalities or deviations from the norm.

Application in Healthcare Professions

Professionals in various healthcare fields, such as physical therapy, occupational therapy, nursing, and chiropractic care, heavily rely on anatomy, physiology, and pathology to provide essential care to their patients. Whether diagnosing injuries, planning surgeries, or designing rehabilitation programs, a deep understanding of these subjects is pivotal.

Ongoing Learning and Advancements

Given the constant evolution of medical knowledge, therapists and healthcare professionals must engage in continuous learning to stay updated with the latest discoveries and advancements. New research, technologies, and treatment modalities emerge regularly, necessitating ongoing education to provide the best possible care.

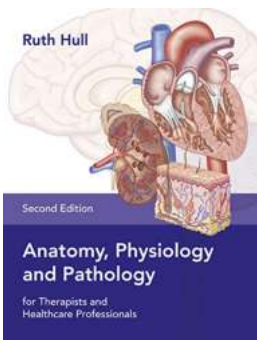
Professional Development Opportunities

Various organizations offer continuing education courses, seminars, conferences, and online resources to help therapists and healthcare professionals expand their knowledge in anatomy, physiology, and pathology. These opportunities enable professionals to stay abreast of breakthroughs, refine their practices, and enhance patient outcomes.

The Impact on Patient Care

A comprehensive understanding of anatomy, physiology, and pathology enables therapists and healthcare professionals to deliver more accurate diagnoses, personalized treatment plans, and proactive preventive measures. By ensuring solid foundations in these fields, professionals can provide optimal care and improve patient satisfaction.

For therapists and healthcare professionals, anatomy, physiology, and pathology are indispensable areas of study. The intricate interplay between these fields equips professionals with the necessary knowledge to diagnose, treat, and prevent medical conditions effectively. Embracing ongoing learning opportunities and staying updated with advancements ensures that therapists and healthcare professionals provide the highest level of care, paving the way for improved patient outcomes.



Anatomy, Physiology and Pathology for Therapists and Healthcare Professionals

by Ruth Hull (Kindle Edition)

★★★★☆ 4.8 out of 5

Language : English
File size : 76233 KB
Text-to-Speech : Enabled
Screen Reader : Supported
Enhanced typesetting : Enabled
Word Wise : Enabled
Print length : 968 pages



Written in a clear, no-nonsense style, this is the ideal textbook for students of complementary therapy up to Levels 2 and 3, nursing, physical therapy, or those studying any course requiring a detailed knowledge of anatomy, physiology and pathology.

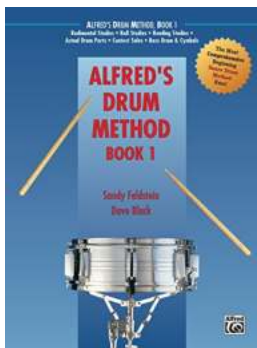
Designed for use both in the classroom and as a home study resource, it provides all the information necessary to meet or exceed the curriculum requirements of all the major international awarding bodies and incorporates many unique features not found in other texts.

This updated and expanded edition complements Ruth Hull's companion text, *Anatomy, Physiology and Pathology Colouring and Workbook for Therapists and Healthcare Professionals*, and:

- meets the standards required by all the main professional bodies for massage, aromatherapy, and reflexology

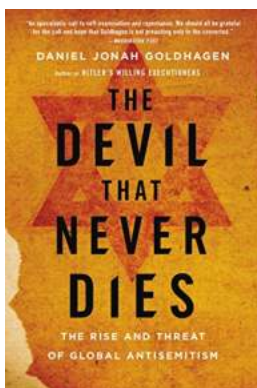
- contains updated graphics and tables throughout to bring the book right up-to-date for today's student
- interspersed throughout with 'study tips', 'in the classroom', '...in a nutshell', 'did you know?' and 'infoboxes'
- features comprehensive muscle tables of origin, insertion, innervation, action
- contains basic pathology of significant diseases and disorders
- has a study outline, revision and multiple choice questions for each chapter.

Endorsed and reviewed by awarding bodies and professional associations and adopted by colleges worldwide.



The Alfred Drum Method: Unlock Your Potential and Master the Drums!

Are you an aspiring drummer looking to take your skills to the next level? Look no further than the Alfred Drum Method! This comprehensive guide is designed to help drummers...



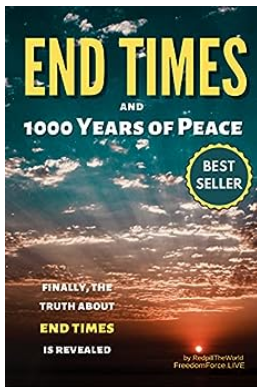
The Rise And Threat Of Global Antisemitism: Uncovering the Menace Plaguing Our Society

Antisemitism, defined as hostility or prejudice against Jews, has plagued societies throughout history, culminating in some of the darkest chapters of humanity. Despite the...



The World's Worst Problems: Unveiling Frank Noyes' Perspective

When it comes to identifying and addressing the world's most pressing problems, it requires the expertise and insight of individuals who have dedicated their lives to...



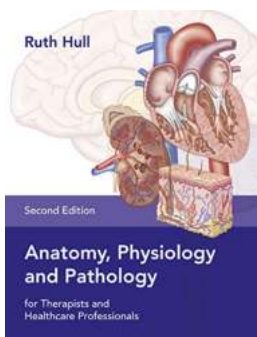
End Times and 1000 Years of Peace: The Divine Promise

Throughout history, mankind has pondered the concept of the end times. Visions of cataclysmic events, prophecies, and divine judgments have long captured our imagination....



Mystery Thriller Suspense Box Sets: Unravel the Enigmatic World

Are you a fan of thrilling mysteries, suspenseful plots, and enigmatic detectives? If so, then you're in for a treat! Mystery thriller suspense box sets are the perfect...



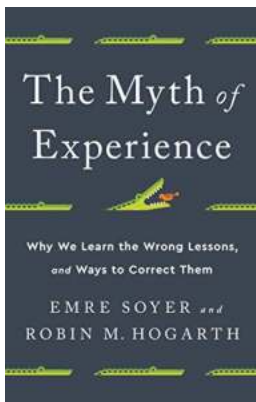
Anatomy Physiology And Pathology For Therapists And Healthcare Professionals

As therapists and healthcare professionals, understanding the intricacies of human anatomy, physiology, and pathology is essential to...



Anger Management For Parents: Find Peace for a Harmonious Family

Parenting can be a beautiful journey filled with joy, love, and fulfillment. However, it can also have its fair share of challenges and frustrations. It's not uncommon for...



The Myth Of Experience: Debunking the Misperceptions Surrounding Expertise

In the realm of knowledge and skills, experience has long been regarded as the ultimate teacher. It's commonly believed that the more experience one has, the more expertise...

[anatomy physiology and pathology course](#)

[anatomy physiology and pathology for therapists and healthcare professionals](#)

[anatomy physiology and pathology book](#)

[anatomy physiology and pathology ruth hull](#)

[anatomy physiology and pathology for therapists and healthcare professionals pdf](#)

[anatomy physiology and pathology meaning](#)

[anatomy physiology and pathology level 4](#)

[anatomy physiology and pathology online courses](#)

[anatomy physiology and pathology for the massage therapist](#)